

Model FD-2 Supply Gas System

The Model FD-2 instrumentation supply gas/dehydration system provides filtered, dehydrated, regulated supply gas necessary for control valve operation. The FD-2 incorporates all necessary components to form one convenient, fully-tested, pre-adjusted package. The FD-2 provides the ultimate protection for supply gas. Dual supply gas regulators and dual FD-1500 Filter/Dryers are installed in parallel to provide uninterrupted service.

Usage:

All pneumatic instrumentation

Incorporates the Following Components:

- High Pressure Supply Gas Regulator (qty. 2)
- Model RV Relief Valve
- Model FD-1500 Filter/Dryer (qty. 2)

Features:

- Package system provides regulated, filtered, dry supply gas for instrumentation and actuators.
- Dual supply gas regulators and FD-1500 Filter-Dryers provide uninterrupted service.
- Protect control instrumentation from dirt, freezing and excessive moisture.
- All tubing and tubing fittings 316 SS.
- Available with all 316 SS hardware (optional).
- Complete with 2.5" SS Liquid-filled gages standard.
- Quick change cartridges easily replaced without shut-down.
- Standard mounting accepts panel mount or 2" pipe mount.

Models Available:

- FD-2 (standard): PIN Number D1-1028
- FD-2 (stainless steel hardware): PIN Number D1-1029

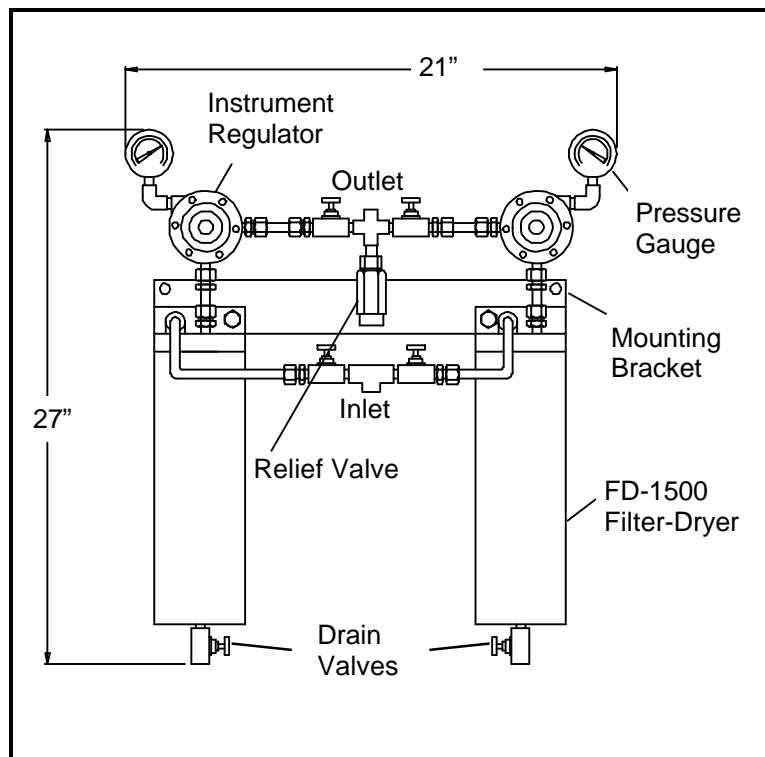


Figure 1- Model FD-2 Supply Gas System

Specifications:

MAOP:	1500 psig (10,340 kPa) *all units hydrotested to 2250 psig (15,510 kPa)
Flow Capacity:	50 SCFM (81.0 m ³ /hr)
Max.Temp:	200°F (93°C)
Filtration:	10μ nominal (110 in. ² filtration media) per cartridge
Dehydration:	2 lbs. (0.9 kg) silica gel water absorption per cartridge
Body:	carbon steel
Inlet Port:	¼" NPT
Outlet Port:	¼" NPT
Drain:	¼" NPT with needle valve
Dimensions:	27" (685 mm) x 21" (533 mm)
Mounting:	2" pipe mount standard for all loose equipment custom bracket (standard for all Becker control valves)
Weight:	65 lbs. (143 kg)
Coating:	Sprayed epoxy coating

Becker Also Manufactures the Following Filter-Dryer Products:

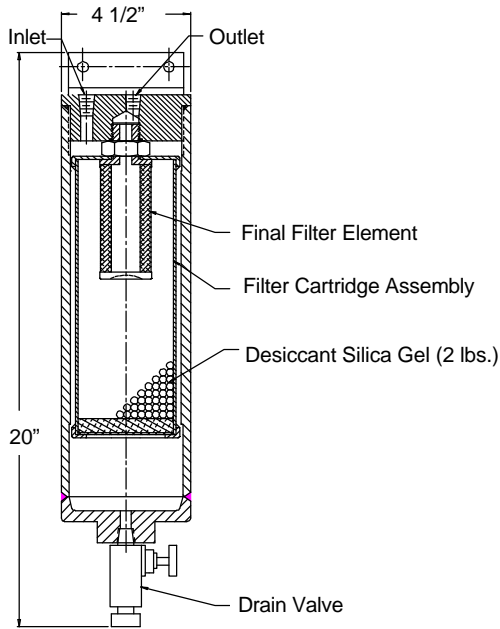


Figure 2- Becker's **Model FD-1500** Filter-Dryer filters and dehydrates supply gas for control valves. The FD-1500 is the heart of the FD-1 and FD-2 Supply Gas System, providing superior dehydration and filtration of instrumentation supply gas.

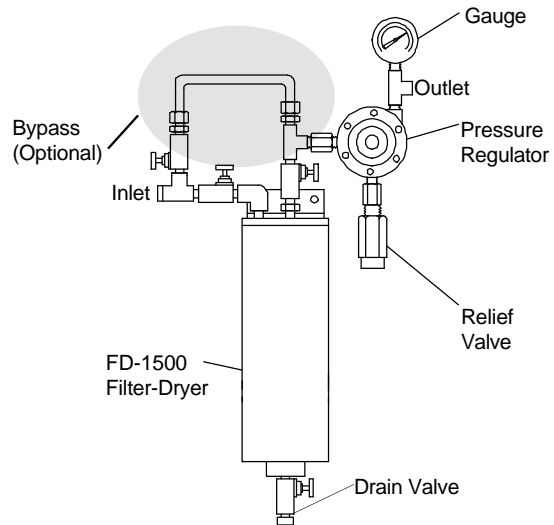


Figure 3- Becker's **Model FD-1** Supply Gas System incorporates the Model FD-1500 Filter-Dryer. The FD-1 provides an economical Supply Gas System with complete regulation, filtration, dehydration and relief in a single package.

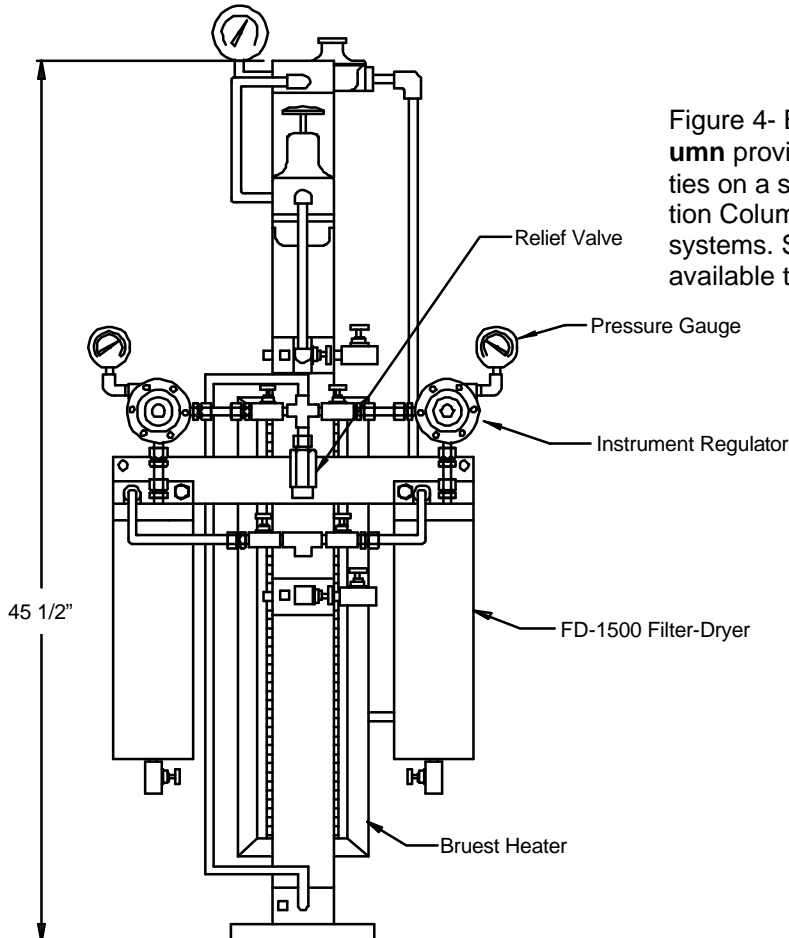


Figure 4- Becker's **Pressure Instrumentation Column** provides a wide range of supply gas capabilities on a skid-mounted package. The Instrumentation Column is designed for low volume, low output systems. Several standard or custom designs are available to suit each specific need.

BECKER
PRECISION EQUIPMENT INC.

Becker Precision Equipment, Inc.
950 Pratt Boulevard
Elk Grove Village, Illinois 60007 USA
Tel. (847) 437-5940
Fax. (847) 437-2549
Toll-Free (800) 323-8844

E-Mail: Becker@bpe950.com
Website: www.bpe950.com