

Model FD-1 Supply Gas System “The Economical Supply Gas System”

The Model FD-1 Supply Gas System provides filtered, dehydrated, regulated supply gas necessary for control valve operation. The FD-1 incorporates all necessary components to form one convenient, fully-tested, pre-adjusted package. The FD-1 provides an economical supply gas system for all instrumentation supply gas requirements.

Usage:

All pneumatic instrumentation

Incorporates the Following Components:

- High Pressure Supply Gas Regulator (qty. 1)
- Model RV Relief Valve (qty. 1)
- Model FD-1500 Filter/Dryer (qty. 1)

Features:

- Package system provides regulated, filtered, dry supply gas for instrumentation and actuators.
- Single supply gas regulator and FD-1500 Filter-Dryer is an economic package.
- Protect control instrumentation from dirt, freezing, and excessive moisture.
- All tubing and tubing fittings 316 SS.
- Available with all 316 SS hardware (optional).
- Complete with 2.5" SS Liquid-filled gages standard.
- Quick change cartridges easily replaced without shut-down.
- Standard mounting accepts panel mount or 2" pipe

Models Available:

FD-1 without bypass (standard): PIN Number D1-0042

FD-1 with bypass: PIN Number D1-0043

FD-1 without bypass (stainless steel hardware): PIN Number D1-0044

FD-1 with bypass (stainless steel hardware): PIN Number D1-0045

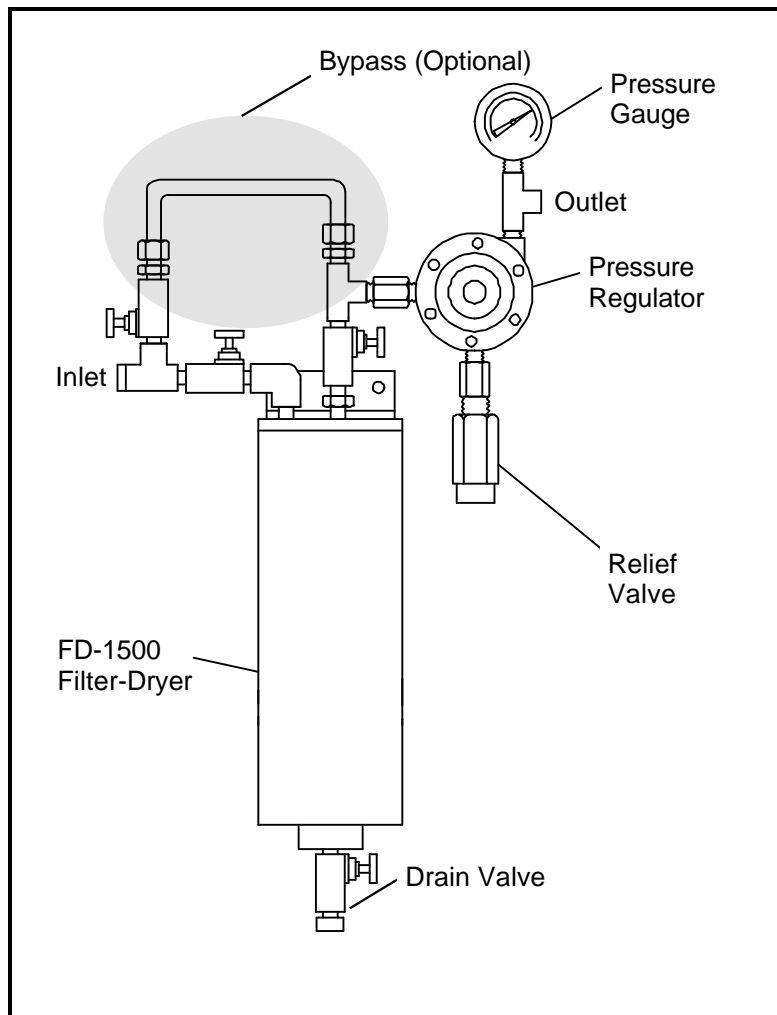


Figure 1- Model FD-1 Supply Gas System with Bypass

Specifications:

MAOP:	1500 psig (10,340 kPa) *all units hydrotested to 2250 psig (15,510 kPa)
Flow Capacity:	50 SCFM (1.4 m ³ /hr)
Max.Temp:	200°F (93°C)
Filtration:	10μ nominal (110 in. ² filtration media)
Dehydration:	2 lbs. (0.9 kg) silica gel water absorption
Body:	carbon steel
Inlet Port:	¼" NPT
Outlet Port:	¼" NPT
Drain:	¼" NPT with needle valve
Dimensions:	28" (711 mm) x 11 1/4" (286 mm)
Mounting:	2" pipe mount standard for all loose equipment custom bracket (standard for all Becker control valves)
Weight:	29 lbs. (13 kg)
Coating:	Sprayed epoxy coating

Becker Also Manufactures the Following Filter-Dryer Products:

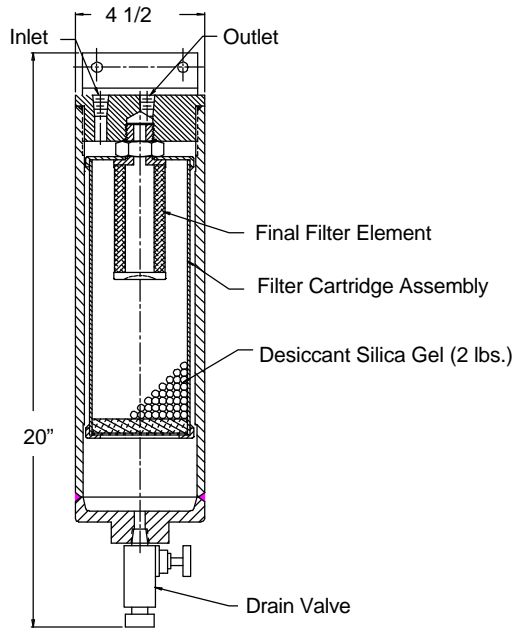


Figure 2- Becker's **Model FD-1500** Filter-Dryer filters and dehydrates supply gas for control valves. The FD-1500 is the heart of the FD-1 and FD-2 Supply Gas System, providing superior dehydration and filtration of instrumentation supply gas.

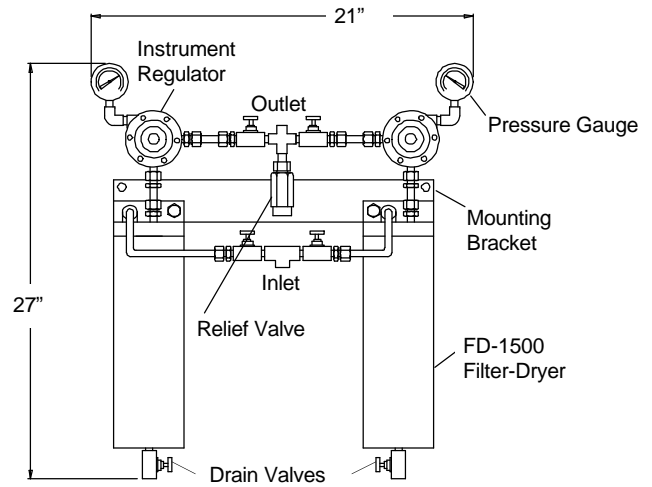


Figure 3- Becker's **Model FD-2** provides increased security over the FD-1 by utilizing redundant FD-1500 Filter-Dryers and High Pressure Supply Gas Regulators. The result is a virtually uninterrupted supply gas.

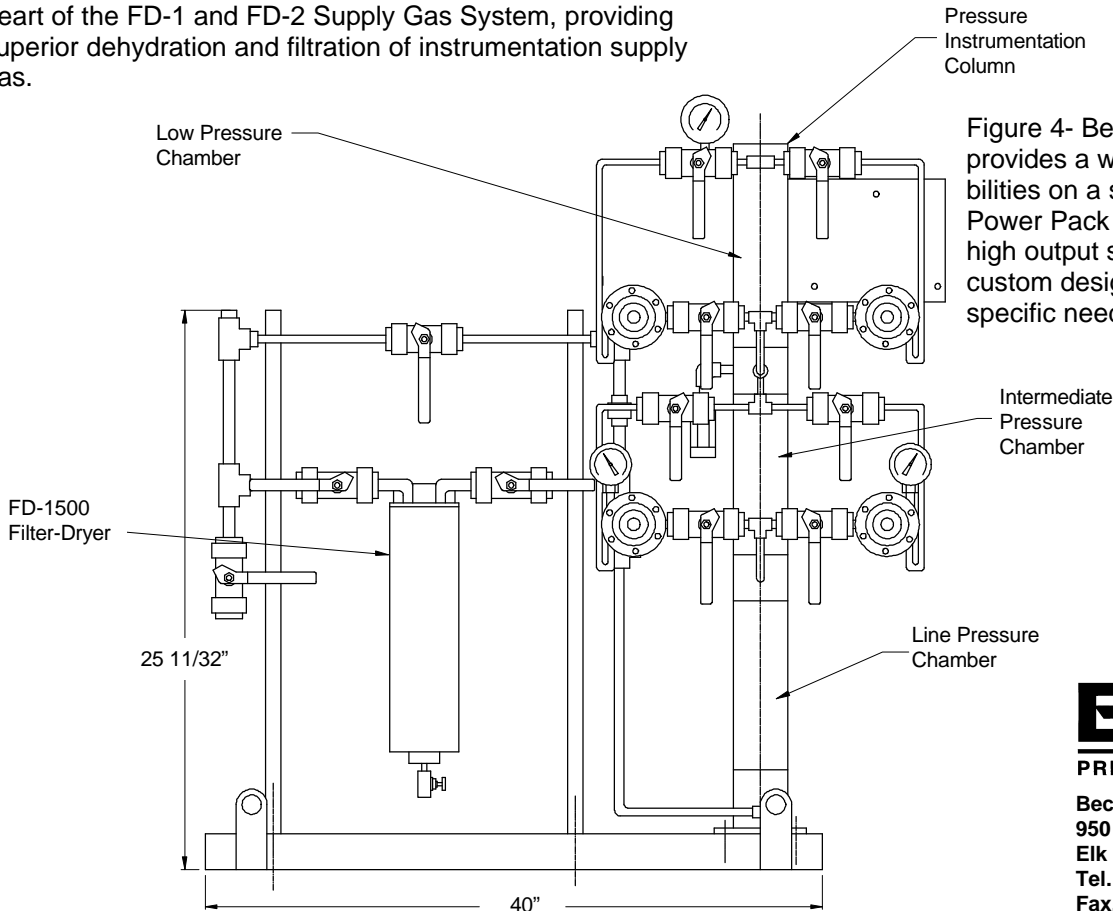


Figure 4- Becker's **Power Pack System** provides a wide range of supply gas capabilities on a skid-mounted package. The Power Pack is designed for high volume, high output systems. Several standard or custom designs are available to suit each specific need.

BECKER
PRECISION EQUIPMENT INC.

Becker Precision Equipment, Inc.
950 Pratt Boulevard
Elk Grove Village, Illinois 60007 USA
Tel. (847) 437-5940
Fax. (847) 437-2549
Toll-Free (800) 323-8844

E-Mail: Becker@bpe950.com
Website: www.bpe950.com