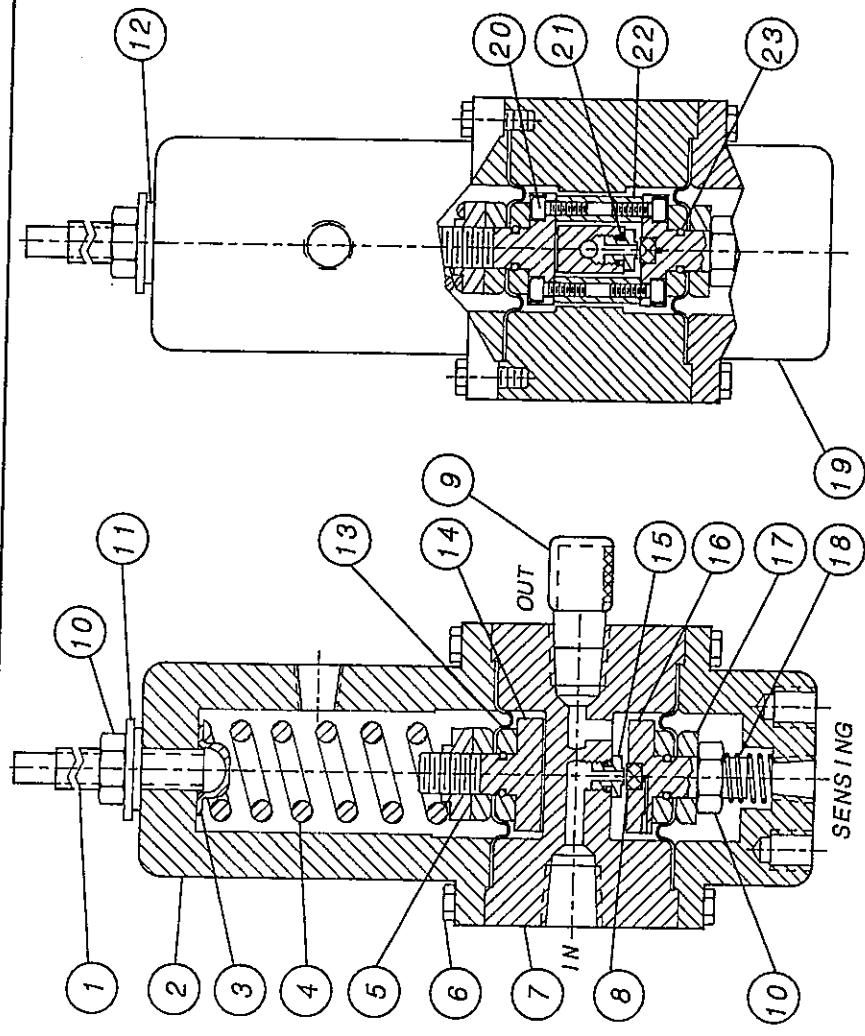


AB CONTROL ADJUSTMENT PROCEDURE  
(REFER TO ALL DRAWINGS WITH AB CONTROL)

1. ADJUST THE VRP PILOT AS OUTLINED IN THE GENERAL PILOT ADJUSTMENT PROCEDURE.
  
2. ADJUST SUPPLY REGULATOR (ITEM 1) TO 10 PSI LESS THAN THE MINIMUM DESIGNATED POWER GAS.
  
3. IF "OUT" PORT OF THE AB CONTROL (ITEM 13) BLEEDS GAS, TURN THE ADJUSTING SCREW OF THE AB CONTROL COUNTERCLOCKWISE UNTIL IT STOPS BLEEDING. IF THE "OUT" PORT IS NOT BLEEDING, TURN THE ADJUSTING SCREW CLOCKWISE UNTIL THE AB CONTROL STARTS TO BLEED, THEN TURN COUNTERCLOCKWISE TO STOP BLEED.
  
4. INCREASE THE OUTPUT OF THE SUPPLY REGULATOR TO DESIGNATED POWER GAS.

NOTE: THE AB CONTROL IS NOW SET FOR THE DESIGNATED DIFFERENTIAL PRESSURE TO OPERATE THE CYLINDER. IF THE SUPPLY PRESSURE OR SET POINT OF THE REGULATOR IS CHANGED, THE AB CONTROL DOES NOT HAVE TO BE READJUSTED.



ITEM	QTY.	PART NO.	DESCRIPTION
1.	1	25-1035	ADJUSTING SCREW
2.	1	25-1009	SPRING CARTRIDGE
3.	1	11-2503	SPRING SEAT
4.	1	25-1037	SPRING (RED)
5.	1	25-1076	SPRING NUT
6.	12	98-3137	1/4-20 X 3/4 HHCS 316 S.S.
7.	1	25-1039	SP-BODY
8.	1	25-1031	BUNA-N-SEAT
9.	1	01-2572	1/4 VENT ELBOW
10.	2	98-3056	1/2-20 HEX JAM NUT
11.	1	98-3185	1/2 S.S. WASHER
12.	1	25-1203	THREAD SEAL
13.	2	25-1027	DIAPHRAGM W/CONVOLUTE
14.	1	25-1018	OUTSIDE PISTON
15.	1	25-1030	1/8 NOZZLE
16.	1	25-1019	BOTTOM INSIDE PISTON
17.	4	25-1016	WASHER
18.	1	25-1033	BOTTOM SPRING
19.	1	25-1022	PRESSURE CARTRIDGE
20.	4	98-2614	8-32 X 1/2 SHCS
21.	1	95-2609	O-RING-010
22.	2	25-1023	PILOT POST
23.	2	25-2615	O-RING-012

NOTE: 1. ITEMS NO. 5, 6, 10 AND 15 ARE TORQUED TO 95-100 In. lbs.

BECKER PRECISION EQUIPMENT INC.  
 950 PRATT BLVD., ELK GROVE, ILL. 60007  
 SCALE: N.T.S. APPROVED BY: *VW* DRAWN BY: MK  
 DATE: 10-12-94 REVISED

bpe AB CONTROL DRAWING NUMBER

TECHNICAL DATA

<p>CONNECTIONS:          ALL PORTS - 1/4 N.P.T. FEMALE</p> <p>MATERIALS:          DIAPHRAGMS - BUNA-N AND NYLON          SEATS - BUNA-N          NOZZLES, POSTS, CAP SCREWS - 316 S.S.          BODY, PI... WASHERS - 2024-T351 ALUMINUM (ANODIZED)</p>	<p>OVERALL SIZE:          LENGTH - 9"          DIAMETER - 3-3/4"</p> <p>PRESSURE RATINGS:          ALL PORTS - 600 PSIG MAX.          CONTROL RANGE;</p> <p>RANGE SPRING PART          COLOR NUMBER          00-200 RED 25-1037</p>
<p>CV FACTOR (FLOW CAPACITY)          Cv = .991  <math>Q = \sqrt{\frac{520}{G}} \times 13.72 \times Cv \times P</math>          Q = FLOW (SCFH)          G = SPECIFIC GRAVITY OF GAS          T = 460 + TEMPERATURE IN F          P = SUPPLY PRESSURE (PSIA)</p>	